

About Us

Activities are carried out on our 7 acre nature Reserve consisting of wetlands, meadows and woods. A classroom is available in bad weather, however our class shelters allow work to continue even when it gets wet.

All activities are lead by our friendly, knowledgeable education team, and are aimed to give the children a 'hands-on' learning experience.

The Nature Reserve is situated next to the BT Madley Centre providing a unique backdrop of the satellite dishes. The Nature reserve also has great historical interest, including being part of the former World War 2 Madley Airfield.

How to book

Select the activities you would like to do (each topic takes half a day) and book your visit by either phoning our Education Officer, Louise Murphy on 01981 251616 or emailing at contact@mesc.org.uk.

NB Activities within topics are flexible, so call Louise to discuss a programme to suit your needs.

Adult Ratios

Adult ratios must be at least 1:4 (if pond dipping 1:3 for safety). These ratios do not apply to Eco-days, however extra help will benefit the children's learning.

Costs

Visits to MESC

Full day—£140 / class (upto 35 children)

Half day—£80 / class (upto 35 children)

A full day is up to 5hrs between 9am and 3pm.

A half day is up to 2.5hrs in either the morning (between 9 and 12am) or the afternoon (between 12 and 3pm).

Eco-days at School

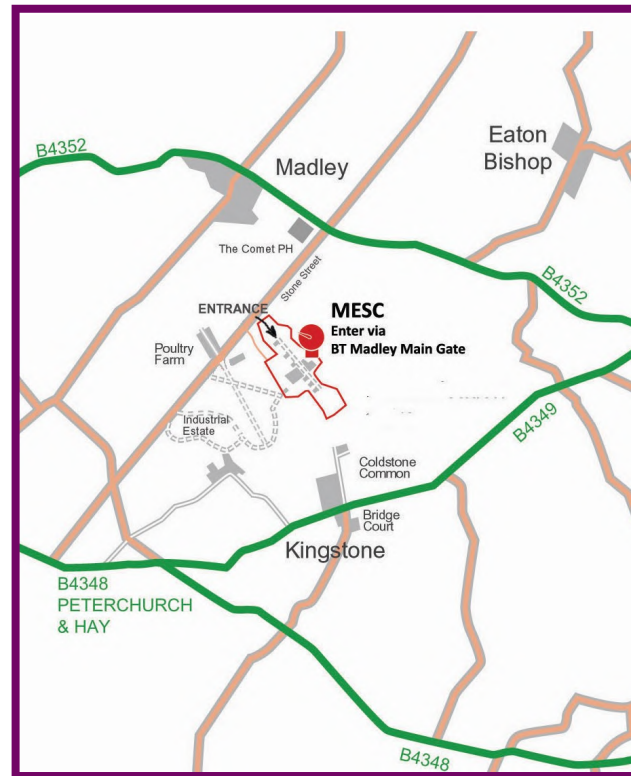
Full day—£150 + travel exp for up to 4 class sessions

Half day—£85 + travel exp for up to 2 class sessions

Eco-days can include an assembly if requested. Adult ratios do not apply, although extra bodies are useful.

How To Find Us

MESC is less than 7 miles South West of Hereford, near the village of Madley.



Directions from Hereford

Follow the A465 Hereford to Abergavenny road, turn right towards Madley shortly after the sign for the Belmont Golf Course. Follow the road through Clehonger until you reach the cross-roads at the Comet Inn, turn left in to Stoney Street and follow the road for about half a mile. Then take the turning on the left at the BT Madley Site Entrance, and carry on up the drive to the gatehouse.

Pull up in the lay-by on the left and let the gatehouse know you've arrived.



Madley Environmental Study Centre (MESC)

where nature meets technology - www.mesc.org.uk - charity reg. 1088379

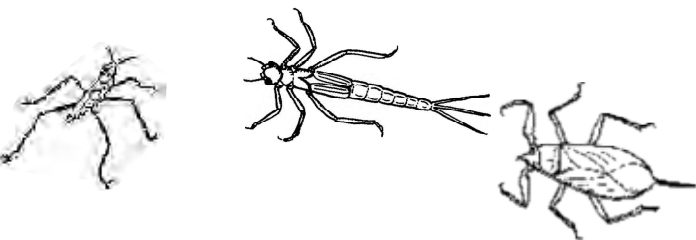


Wildlife Discovery

For Foundation Level

At MESC

Enjoy our wildlife activities for a great day out in amazing surroundings



Baby Birds

A discovery into what birds (and other animals) need to survive. Children wear little beaks and pretend to be baby birds. Mother bird (the leader) teaches the baby birds how the wood can provide the food, water, shelter and air that they (and all other animals) need to survive. Activities include building giant nests for the baby birds, the caterpillar game and the woodcutter game.

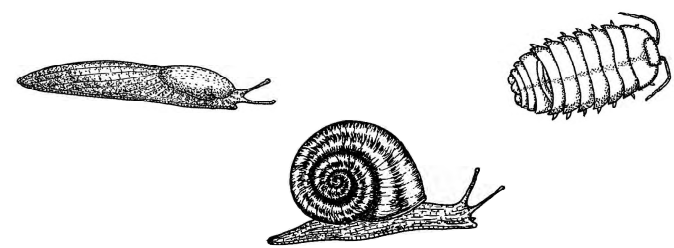
Tree Art

Children take a tree-top walk, by holding a mirror to see the boughs of the trees. The mirror is then placed on the ground to capture their favourite tree-top reflection, and leaves, twigs and stones found to surround it for a frame.

Other activities include matching a leaf with the tree it came from and making crayon rubbings of them and creating animal sculptures using natural objects in the woods.

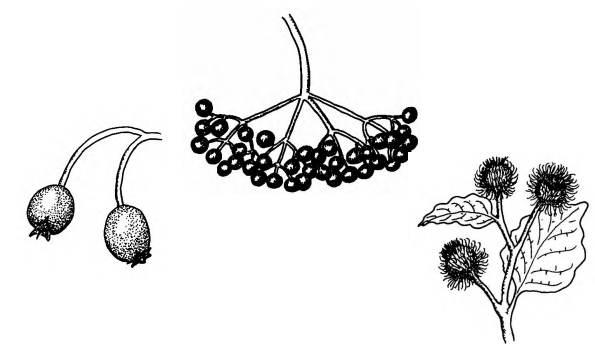
Mini-beast Hunt

Mini-beasts can be found by gently shaking tree branches, looking under logs and by pond dipping. Light weight nets are available for pond dipping but pre-school supervision ratios must be a least 1:3 for safety reasons.



Autumn Wonders

Activities exploring the changes that occur this season, including Autumn stories, story sticks, the seed trail and making Autumn leaf crowns. This is also a great time of year to make an environmental sculpture using natural objects in the woods.



Should it be There?

These activities focus on getting to know and care for the environment. Children follow a rope trail through the woods and try to spot the toy animals that are trapped in litter, and say why it is harmful to them. They are then given a picture sheet of objects that should be found in the woods (leaves, cones, etc) and are asked to find them. The rope trail can be followed back, this time with feely-buckets of natural items for children to guess.

Making Sense

A range of activities to appeal to all the senses. Children explore the colours in nature and collect them to create Colour Palettes; collect leaves and mash them with a magic potion to create Smelly Cocktails; find natural objects that feel like their special touch word to make Touch Collections and listen to the sounds of the nature reserve in Natures Noises. Children can also use colours to remember their day by creating a story stick.

Stories and Songs

Children are told 'The Witch of Madley' story, with actions and activities such as protecting the trees from the witch with woodland potions.

Songs such as 'Incy-Wincy Spider' are sung and well known stories such as 'The Hungry Caterpillar' are told, with opportunities to make characters and scenes out of mud and other natural materials.

